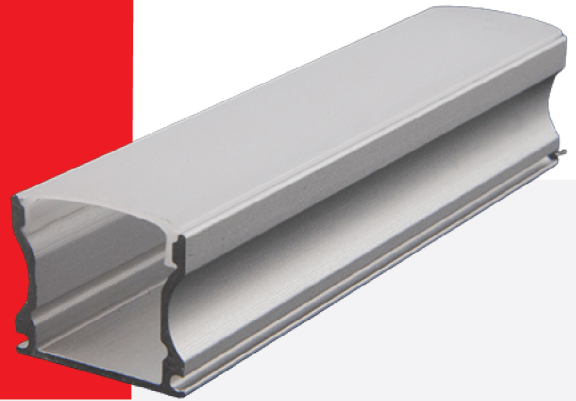


ITEM NO: 504088

ALUMINUM PROFILE SIZE 17*14



What is linear lighting?

Linear lighting is defined as a linear shape luminaire (opposed to square or round). These luminaires long optics to distribute the light over a more narrow area than with traditional lighting. Usually, these lights are long in length and are installed as either suspended from a ceiling, surface mounted to a wall or ceiling or recessed into a wall or ceiling.

Each piece consists of 2 meters of High-Quality aluminum profile with very good thickness which helps in sinking the heat of the strip light.

Each Piece includes:

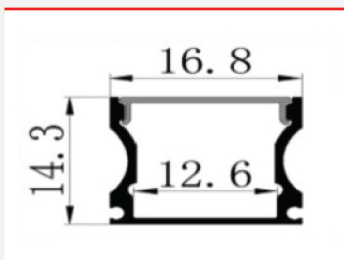
1. Aluminum profile
2. Opal PC diffuser
3. 2 pcs End cap/Piece
4. 2 pcs metal Clips/meter

Areas of application:

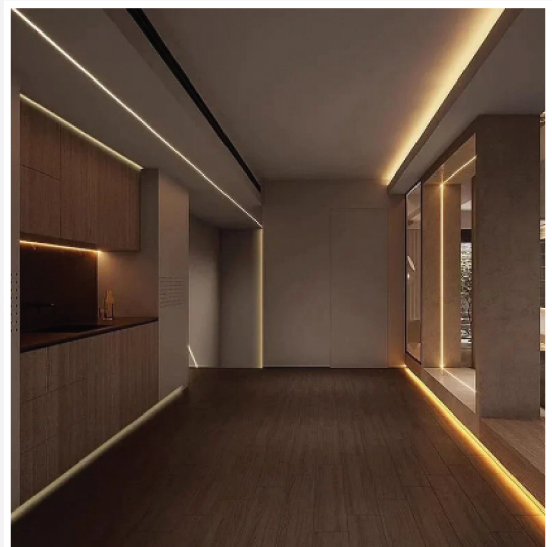
- > General indoor illumination
- > General outdoor illumination
- > Decorative illumination
- > Private living areas

CAPTION	THE VALUE
Material	Pure Aluminum
Color	Silver
Thickness	1 mm
Length	2 MTR
Width	16.8 mm
Height	14.3 mm

Dimensions



Accessories



Suggested Installation Areas



Apartment



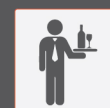
Supermarket



Retail Store



Office



Hotel



School



Hospital