

# ITEM NO: 507023-W/BM

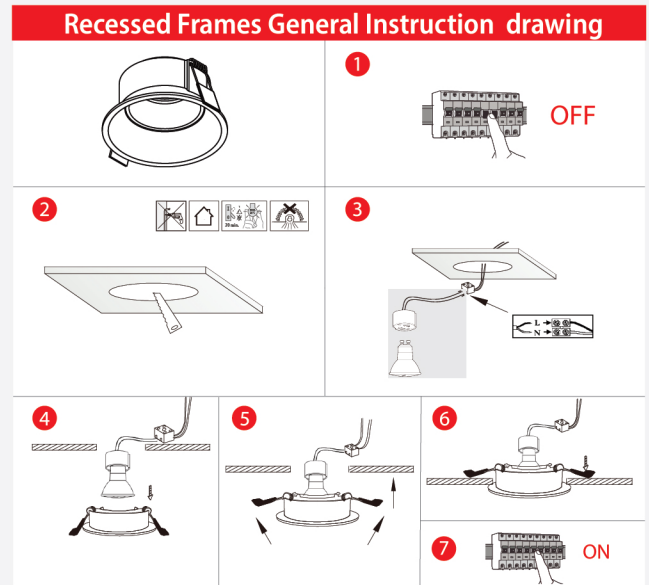
ANTI-GLARE FRAME

WHITE / BLACK MATT FULL ALUMINUM

FRONT SIDE LAMP CHANGEABLE



CAPTION	THE VALUE
MATERIAL	DIA-CASTING ALUMINUM
COLOR	WHITE/ BLACK MATT
THICKNESS	2 MM
CUT HOLE	70 MM
SIZE	90*45 MM



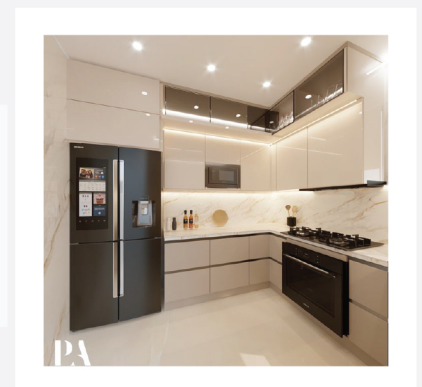
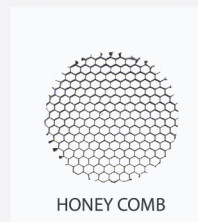
### Areas of application:

- > General indoor illumination
- > Decorative illumination
- > Private living areas

### Super protection:

- > It is made of very safe materials, so it is environmentally friendly
- Provides flexibility in installation and ease of installation.

### accessories



### Suggested Installation Areas



Apartment



Supermarket



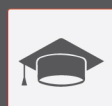
Retail Store



Office



Hotel



School



Hospital