

GU-10 FITTINGS

Data Sheet

NEWPOWER®

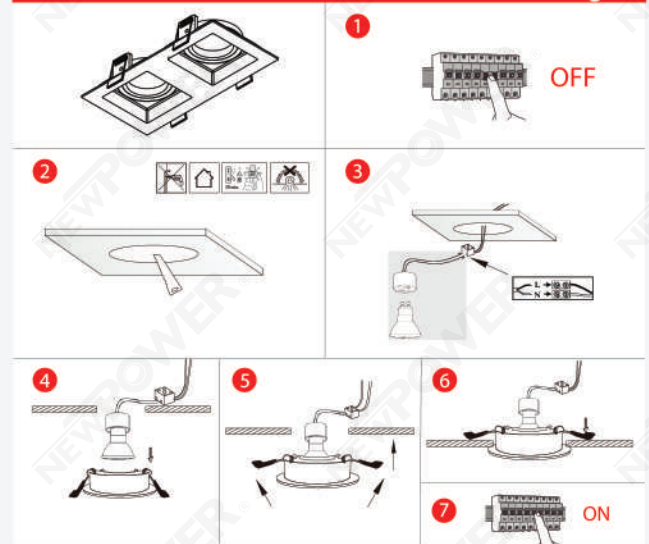
ITEM NO: 507012

**ANTI-GLARE SQUARE FRAME
FULL ALUMINUM WHITE
(LAMP CHANGEABLE FROM DOWN)**



CAPTION	THE VALUE
MATERIAL	DIA-CASTING ALUMINUM
COLOR	WHITE
THICKNESS	2 MM
CUT HOLE	163*80 MM
SIZE	173*90*47 MM

Recessed Frames General Instruction drawing



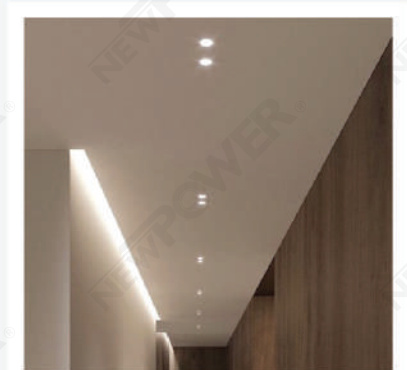
Areas of application:

- > General indoor illumination
- > Decorative illumination
- > Private living areas

Super protection:

- > It is made of very safe materials, so it is environmentally friendly
- Provides flexibility in installation and ease of installation.

accessories



Suggested Installation Areas



Apartment



Supermarket



Retail Store



Office



Hotel



School



Hospital