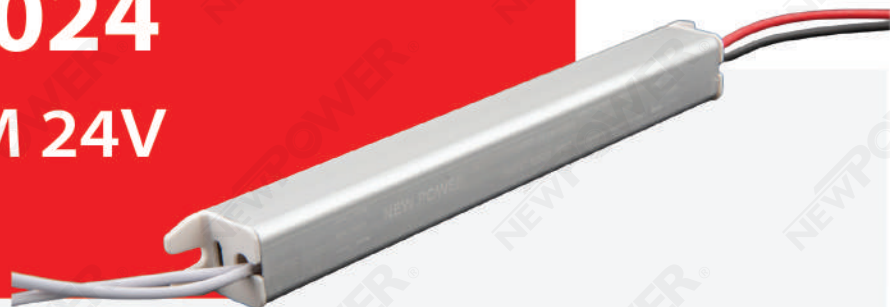


ITEM NO: 508024

DRIVER SUPER SLIM 24V

24 W - IP 20



Areas of application:

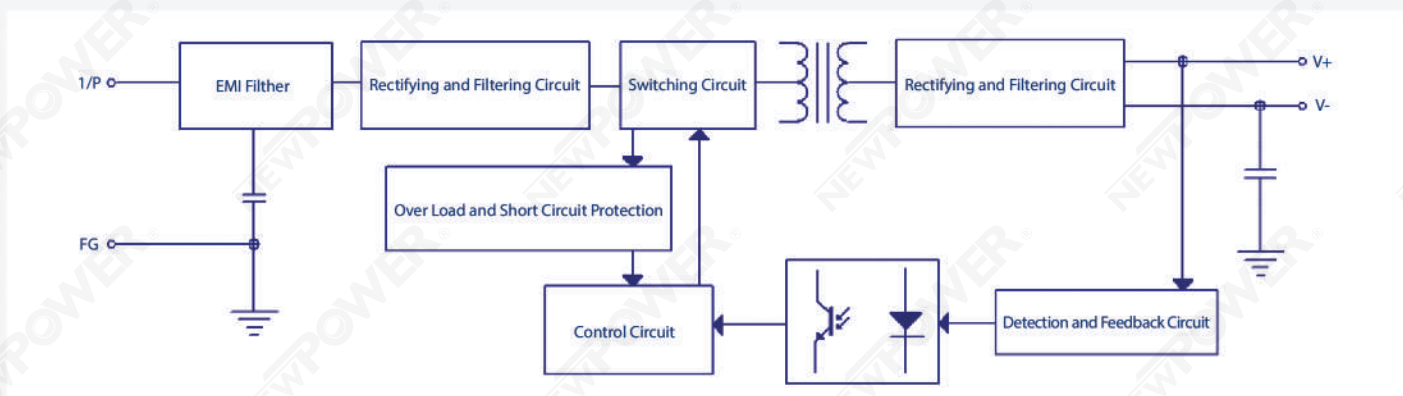
- > General indoor illumination
- > Decorative illumination
- > Private living areas

Features:

- > Aluminum Casing
- > Ultra-light and easy to install
- > High efficiency up to 85%
- > High reliability
- > Wide input Voltage 180 ~ 264Vac
- > Ambient Temperature (Ta) (-30~60°C)
- > Protection Characteristics:
 - Overload Protection: 110%~150% of rated load.
 - Short Circuit Protection: Protection Type: Hiccup mode, Auto-recovery

CAPTION	THE VALUE
Rated Power	24W
Rated Output Voltage	24V
Output Current	0~2.5A
Typical Efficiency	85%
Rated Lifetime	15000 h
Ambient Temperature	-30~60°C
Setup and Rise Time	1.5S, 20mS@230Vac
Dimension	W18 L172 H18 mm
Dimming	NO

UNIT PARTS DIAGRAM



IP
20



Ta
-30~60°C



Apartment



Supermarket



Retail Store



Office



Hotel



School



Hospital