

# LED MODULES

## Data Sheet

**NEWPOWER®**

# ITEM NO: 500020

**LED SPOT LIGHT MODULE**  
**12W 3000K COB BRIDGELUX**  
**LED CHIP BEAM ANGLE: 24°**

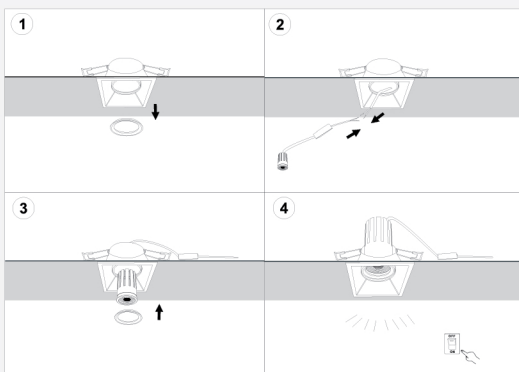


### Areas of application:

- > General indoor illumination
- > Decorative illumination
- > Private living areas

### Super protection:

- > It is made of very safe materials, so it is environmentally friendly Provides flexibility in installation and ease of installation.



CAPTION	THE VALUE
Rated wattage	12 W
Rated current	300 mA
Rated Voltage	220-240V
Power Factor	60/50 Hz
Displacement Factor	0.5
Rated lumens	1200 Lm
Efficiency	100 Lm/w
Lumen Maintenance	3000h
Beam Angle	24°
Color temperature	3000 k
Consistency sdcn	<6
CRI	>80
Rated Lifetime	15000 h
Switch cycle	15000
Ta	45°C
Dimming	No
Width	50mm
Height	57mm

### Installation Instructions:

1. Take off the fixing ring from the Spot Light Fixture.
2. Connect the LED Module to the main power by the color of the wires. Brown is Live line, and Blue is Neutral line.
3. Insert the LED Module to the Spot Light Fixture and fix it by fixing ring.
4. Switch on the power and the light can work normally

