

ITEM NO: 503003

MINI LED SPOT LIGH 3W

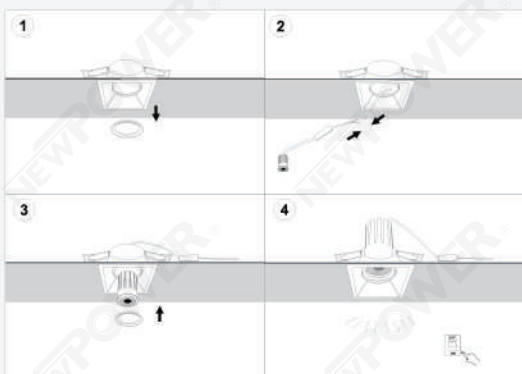


Areas of application:

- > General indoor illumination
- > Decorative illumination
- > Private living areas

Super protection:

- > It is made of very safe materials, so it is environmentally friendly Provides flexibility in installation and ease of installation.



Installation Instructions:

1. Take off the fixing ring from the Spot Light Fixture.
2. Connect the LED Module to the main power by the color of the wires. Brown is Live line, and Blue is Neutral line.
3. Insert the LED Module to the Spot Light Fixture and fix it by fixing ring.
4. Switch on the power and the light can work normally

CAPTION	THE VALUE
Rated wattage	3 W
Rated current	300 mA
Rated Voltage	220-240V
Power Factor	> 0.5 Hz
Displacement Factor	0.5
Rated lumens	300 Lm
Efficiency	100 Lm/w
Lumen Maintenance	3000h
Beam Angle	24°
Color temperature	3000 k
Consistency sdcn	<6
CRI	>80
Rated Lifetime	15000 h
Switch cycle	15000
Ta	45°C
Cutout	30 φ
Width	37 φ
Height	40mm