

SILICON PROFILE

Data Sheet

NEWPOWER®

ITEM NO: 504120

SILICON PROFILE RECESSED SIZE 20*10



Areas of application:

- General indoor illumination
- General outdoor illumination
- Decorative illumination
- Private living areas

How to install it

CAPTION	THE VALUE
Material	Silicon
Color	White
Thickness	2 mm
Length	2 MTR
Width	20 mm
Height	10 mm



How to install it?

1. Reserve the installation groove corresponding to the size of silicone tube at the installation position.
2. Stick the selected light strip into the slot.
3. Connect the light strip to the power supply and connect the wires to make the lamp belt light normally.
4. Cover the silicone tube into the installation groove and install it smoothly (the light band can be fixed by gluing or snapping).



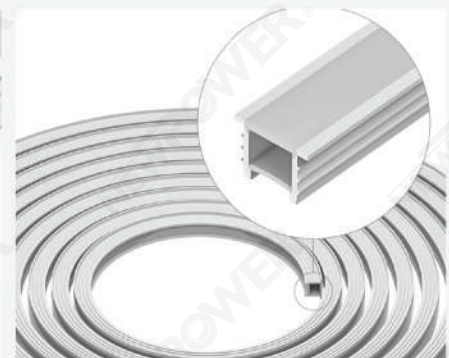
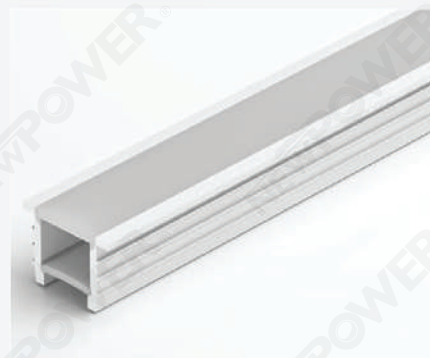
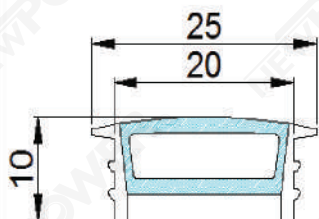
LED Silicone Channel:

- Free bending
- Embedded installation
- Easy to cut

LED Aluminum Channel:

- No bending
- Take up space
- Not easy to cut

Dimensions



Suggested Installation Areas



Apartment



Supermarket



Retail Store



Office



Hotel



School



Hospital