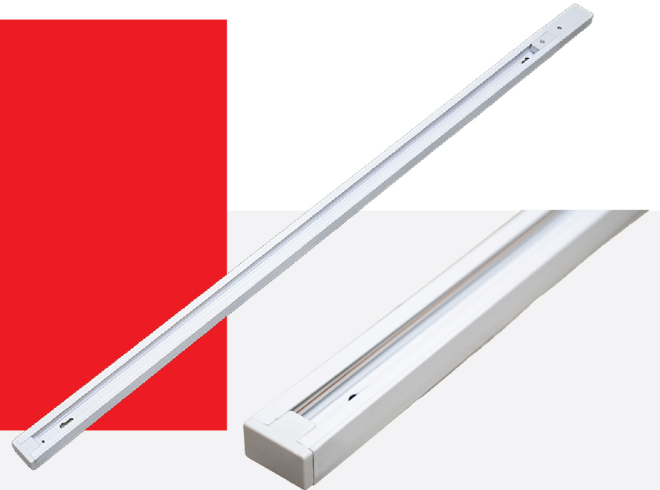


TRACK RAIL

Data Sheet

NEWPOWER[®]

ITEM NO: 114036 TRACK RAIL WHITE HEAVY-DUTY



Each piece consists of 2 meters of High-Quality aluminum profile with very good thickness.

Areas of application:

- > General indoor illumination
- > Decorative illumination
- > Private living areas

CAPTION	THE VALUE
Material	Pure Aluminum
Internal connection	Pure copper
Color	White
Thickness	2 mm
Length	1 MTR
Width	20.7 mm
Height	33.8 mm

Accessories



Suggested Installation Areas



Apartment



Supermarket



Retail Store



Office



Hotel



School



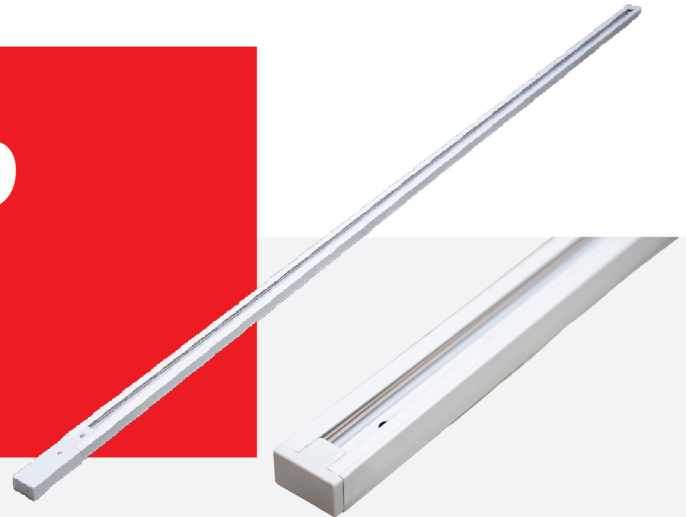
Hospital

TRACK RAIL

Data Sheet

NEWPOWER[®]

ITEM NO: 114039 TRACK RAIL WHITE HEAVY-DUTY



Each piece consists of 2 meters of High-Quality aluminum profile with very good thickness.

Areas of application:

- > General indoor illumination
- > Decorative illumination
- > Private living areas

CAPTION	THE VALUE
Material	Pure Aluminum
Internal connection	Pure copper
Color	White
Thickness	2 mm
Length	2 MTR
Width	20.7 mm
Height	33.8 mm

Accessories



Suggested Installation Areas



Apartment



Supermarket



Retail Store



Office



Hotel



School



Hospital

TRACK RAIL

Data Sheet

NEWPOWER[®]

ITEM NO: 114040 TRACK RAIL BLACK HEAVY-DUTY



Each piece consists of 2 meters of High-Quality aluminum profile with very good thickness.

Areas of application:

- > General indoor illumination
- > Decorative illumination
- > Private living areas

CAPTION	THE VALUE
Material	Pure Aluminum
Internal connection	Pure copper
Color	Black
Thickness	2 mm
Length	1 MTR
Width	20.7 mm
Height	33.8 mm

Accessories



Suggested Installation Areas



Apartment



Supermarket



Retail Store



Office



Hotel



School



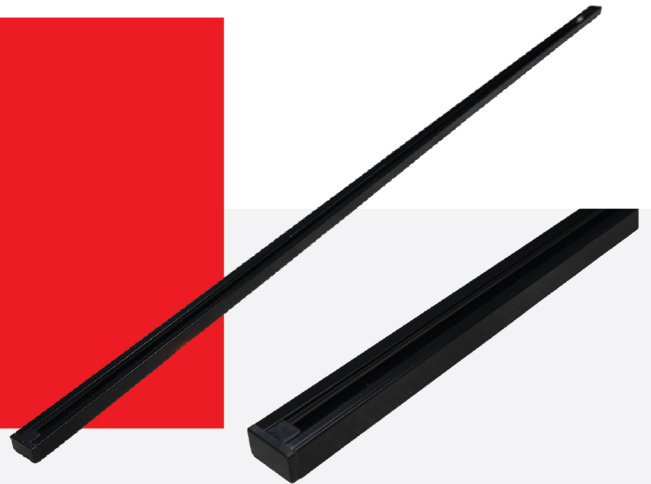
Hospital

TRACK RAIL

Data Sheet

NEWPOWER[®]

ITEM NO: 114043 TRACK RAIL BLACK HEAVY-DUTY



Each piece consists of 2 meters of High-Quality aluminum profile with very good thickness.

Areas of application:

- > General indoor illumination
- > Decorative illumination
- > Private living areas

CAPTION	THE VALUE
Material	Pure Aluminum
Internal connection	Pure copper
Color	Black
Thickness	2 mm
Length	3 MTR
Width	20.7 mm
Height	33.8 mm

Accessories



Suggested Installation Areas



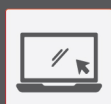
Apartment



Supermarket



Retail Store



Office



Hotel



School



Hospital

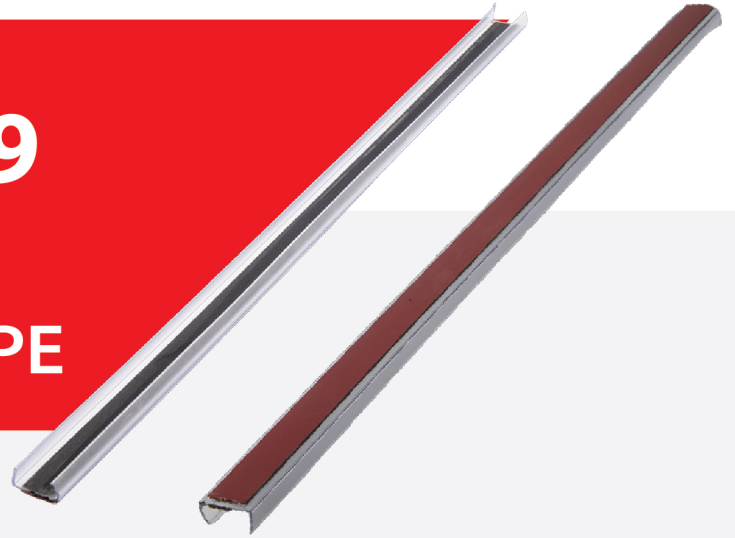
STRIP LIGHT TRUNK

Data Sheet

NEWPOWER[®]

ITEM NO: 114149

STRIP TRUNK 15 MM (PLASTIC) WITH 3M TAPE



Areas of application:

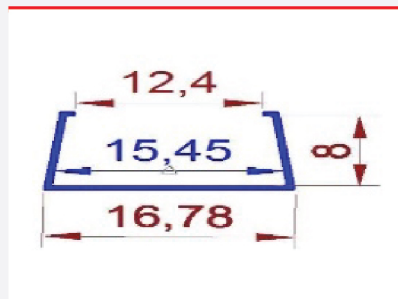
- > General indoor illumination
- > General outdoor illumination
- > Decorative illumination
- > Private living areas

Super protection:

- > It is made of very safe materials, so it is environmentally friendly
- Provides flexibility in installation and ease of installation

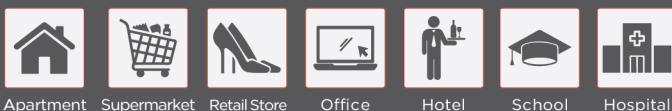


Dimensions



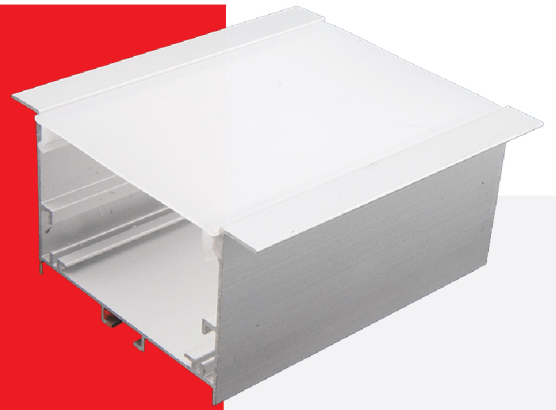
CAPTION	THE VALUE
Material	Plastic
Color	Clear
Thickness	1 mm
Length	2 MTR
Width	15 mm
Height	8 mm

Suggested Installation Areas



ITEM NO: 504008

ALUMINUM PROFILE RECESSED SIZE 50*35



What is linear lighting?

Linear lighting is defined as a linear shape luminaire (opposed to square or round). These luminaires long optics to distribute the light over a more narrow area than with traditional lighting. Usually, these lights are long in length and are installed as either suspended from a ceiling, surface mounted to a wall or ceiling or recessed into a wall or ceiling.

Each piece consists of 2 meters of High-Quality aluminum profile with very good thickness which helps in sinking the heat of the strip light.

Each Piece includes:

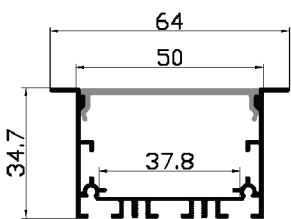
1. Aluminum profile
2. Opal PC diffuser
3. 2 pcs End cap/Piece
4. 2 pcs metal Clips/meter

Areas of application:

- > General indoor illumination
- > General outdoor illumination
- > Decorative illumination
- > Private living areas

CAPTION	THE VALUE
Material	Pure Aluminum
Color	Silver
Thickness	1 mm
Length	2 MTR
Width	50 mm
Height	35 mm

Dimensions



Accessories



Suggested Installation Areas



Apartment



Supermarket



Retail Store



Office



Hotel



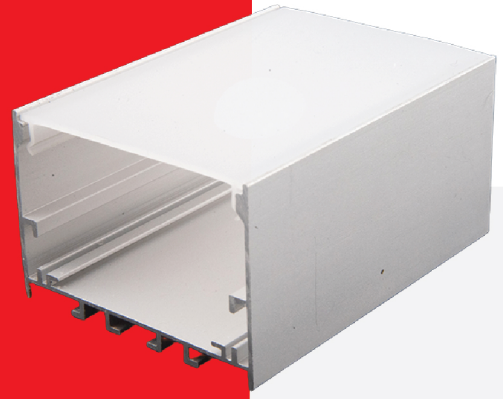
School



Hospital

ITEM NO: 504009

ALUMINUM PROFILE SURFACE SIZE 50*35



What is linear lighting?

Linear lighting is defined as a linear shape luminaire (opposed to square or round). These luminaires long optics to distribute the light over a more narrow area than with traditional lighting. Usually, these lights are long in length and are installed as either suspended from a ceiling, surface mounted to a wall or ceiling or recessed into a wall or ceiling.

Each piece consists of 2 meters of High-Quality aluminum profile with very good thickness which helps in sinking the heat of the strip light.

Each Piece includes:

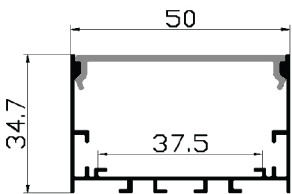
1. Aluminum profile
2. Opal PC diffuser
3. 2 pcs End cap/Piece
4. 2 pcs metal Clips/meter

Areas of application:

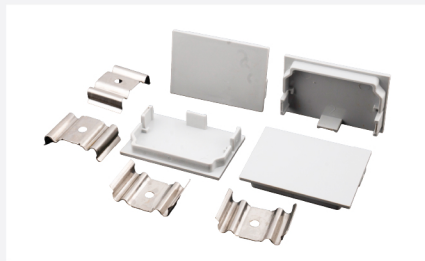
- > General indoor illumination
- > General outdoor illumination
- > Decorative illumination
- > Private living areas

CAPTION	THE VALUE
Material	Pure Aluminum
Color	Silver
Thickness	1 mm
Length	2 MTR
Width	50 mm
Height	34.7 mm

Dimensions



Accessories



Suggested Installation Areas



Apartment



Supermarket



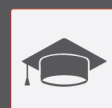
Retail Store



Office



Hotel



School



Hospital

ITEM NO: 504013

ALUMINUM PROFILE SIZE 13*7



What is linear lighting?

Linear lighting is defined as a linear shape luminaire (opposed to square or round). These luminaires long optics to distribute the light over a more narrow area than with traditional lighting. Usually, these lights are long in length and are installed as either suspended from a ceiling, surface mounted to a wall or ceiling or recessed into a wall or ceiling.

Each piece consists of 2 meters of High-Quality aluminum profile with very good thickness which helps in sinking the heat of the strip light.

Each Piece includes:

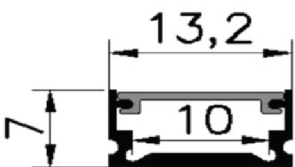
1. Aluminum profile
2. Opal PC diffuser
3. 2 pcs End cap/Piece
4. 2 pcs metal Clips/meter

Areas of application:

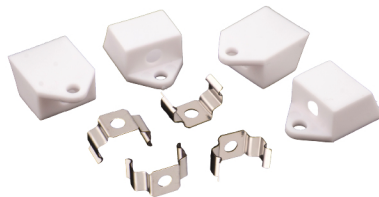
- > General indoor illumination
- > General outdoor illumination
- > Decorative illumination
- > Private living areas

CAPTION	THE VALUE
Material	Pure Aluminum
Color	Silver
Thickness	1 mm
Length	2 MTR
Width	13 mm
Height	7 mm

Dimensions



Accessories



Suggested Installation Areas



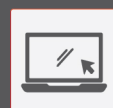
Apartment



Supermarket



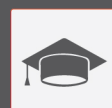
Retail Store



Office



Hotel



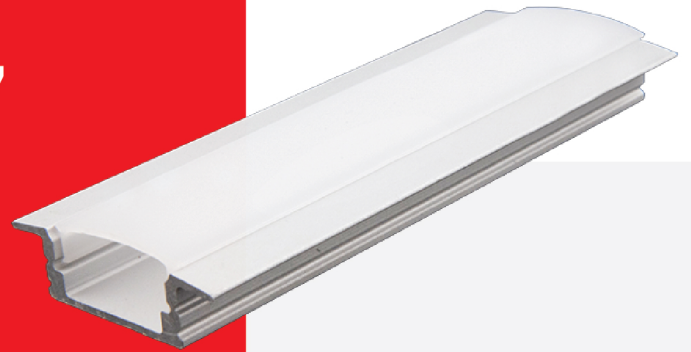
School



Hospital

ITEM NO: 504017

ALUMINUM PROFILE RECESSED SIZE 17



What is linear lighting?

Linear lighting is defined as a linear shape luminaire (opposed to square or round). These luminaires long optics to distribute the light over a more narrow area than with traditional lighting. Usually, these lights are long in length and are installed as either suspended from a ceiling, surface mounted to a wall or ceiling or recessed into a wall or ceiling.

Each piece consists of 2 meters of High-Quality aluminum profile with very good thickness which helps in sinking the heat of the strip light.

Each Piece includes:

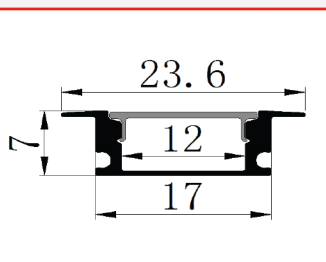
1. Aluminum profile
2. Opal PC diffuser
3. 2 pcs End cap/Piece
4. 2 pcs metal Clips/meter

Areas of application:

- > General indoor illumination
- > General outdoor illumination
- > Decorative illumination
- > Private living areas

CAPTION	THE VALUE
Material	Pure Aluminum
Color	Silver
Thickness	1 mm
Length	2 MTR
Width	17 mm
Height	7 mm

Dimensions



Accessories



Suggested Installation Areas



Apartment



Supermarket



Retail Store



Office



Hotel



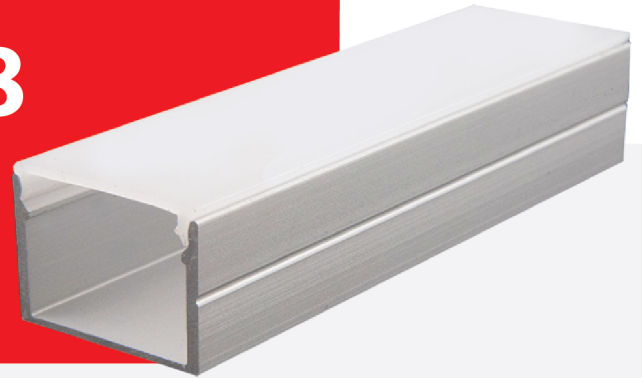
School



Hospital

ITEM NO: 504018

ALUMINUM PROFILE SIZE 19*13



What is linear lighting?

Linear lighting is defined as a linear shape luminaire (opposed to square or round). These luminaires long optics to distribute the light over a more narrow area than with traditional lighting. Usually, these lights are long in length and are installed as either suspended from a ceiling, surface mounted to a wall or ceiling or recessed into a wall or ceiling.

Each piece consists of 2 meters of High-Quality aluminum profile with very good thickness which helps in sinking the heat of the strip light.

Each Piece includes:

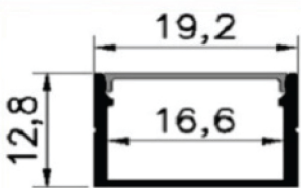
1. Aluminum profile
2. Opal PC diffuser
3. 2 pcs End cap/Piece
4. 2 pcs metal Clips/meter

Areas of application:

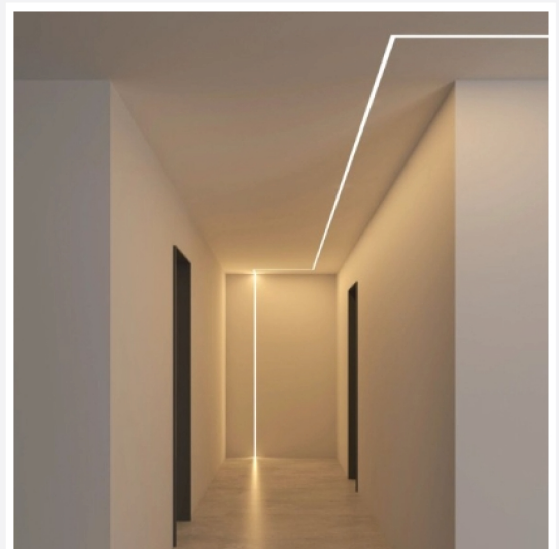
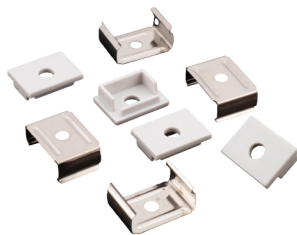
- > General indoor illumination
- > General outdoor illumination
- > Decorative illumination
- > Private living areas

CAPTION	THE VALUE
Material	Pure Aluminum
Color	Silver
Thickness	1 mm
Length	2 MTR
Width	19.2 mm
Height	12.8 mm

Dimensions



Accessories



Suggested Installation Areas



Apartment



Supermarket



Retail Store



Office



Hotel



School

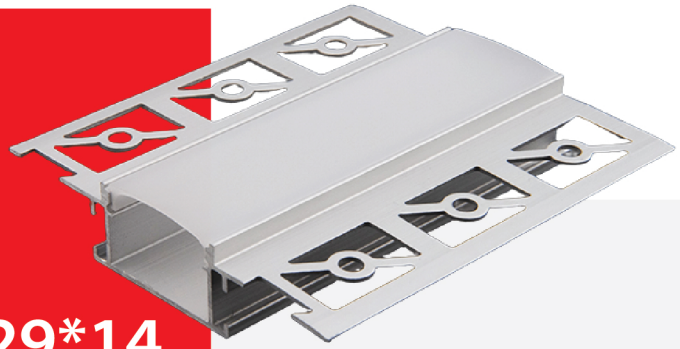


Hospital

ITEM NO: 504020

ALUMINUM PROFILE

TRIMLESS RECESSED SIZE 29*14



What is linear lighting?

Linear lighting is defined as a linear shape luminaire (opposed to square or round). These luminaires long optics to distribute the light over a more narrow area than with traditional lighting. Usually, these lights are long in length and are installed as either suspended from a ceiling, surface mounted to a wall or ceiling or recessed into a wall or ceiling.

Each piece consists of 2 meters of High-Quality aluminum profile with very good thickness which helps in sinking the heat of the strip light.

Each Piece includes:

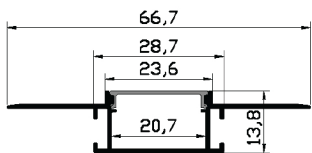
1. Aluminum profile
2. Opal PC diffuser
3. 2 pcs End cap/Piece
4. 2 pcs metal Clips/meter

Areas of application:

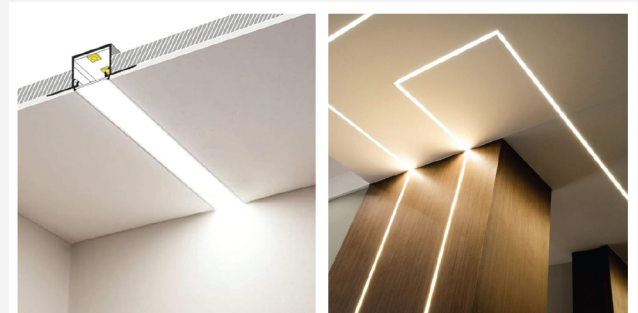
- > General indoor illumination
- > General outdoor illumination
- > Decorative illumination
- > Private living areas

CAPTION	THE VALUE
Material	Pure Aluminum
Color	Silver
Thickness	1 mm
Length	2 MTR
Width	29 mm
Height	14 mm

Dimensions



Accessories



Suggested Installation Areas



Apartment



Supermarket



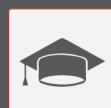
Retail Store



Office



Hotel



School



Hospital

ITEM NO: 504024

ALUMINUM PROFILE ANGLE SIZE 16*16



What is linear lighting?

Linear lighting is defined as a linear shape luminaire (opposed to square or round). These luminaires long optics to distribute the light over a more narrow area than with traditional lighting. Usually, these lights are long in length and are installed as either suspended from a ceiling, surface mounted to a wall or ceiling or recessed into a wall or ceiling.

Each piece consists of 2 meters of High-Quality aluminum profile with very good thickness which helps in sinking the heat of the strip light.

Each Piece includes:

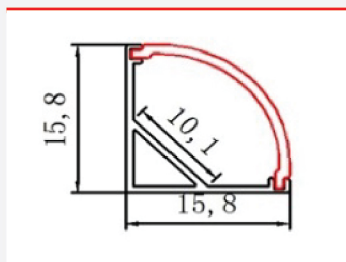
1. Aluminum profile
2. Opal PC diffuser
3. 2 pcs End cap/Piece
4. 2 pcs metal Clips/meter

Areas of application:

- > General indoor illumination
- > General outdoor illumination
- > Decorative illumination
- > Private living areas

CAPTION	THE VALUE
Material	Pure Aluminum
Color	Silver
Thickness	1 mm
Length	2 MTR
Width	15.8 mm
Height	15.8 mm

Dimensions



Accessories



Suggested Installation Areas



Apartment



Supermarket



Retail Store



Office



Hotel



School



Hospital

ITEM NO: 504029

ALUMINUM PROFILE CORNER SIZE 16*16



What is linear lighting?

Linear lighting is defined as a linear shape luminaire (opposed to square or round). These luminaires long optics to distribute the light over a more narrow area than with traditional lighting. Usually, these lights are long in length and are installed as either suspended from a ceiling, surface mounted to a wall or ceiling or recessed into a wall or ceiling.

Each piece consists of 2 meters of High-Quality aluminum profile with very good thickness which helps in sinking the heat of the strip light.

Each Piece includes:

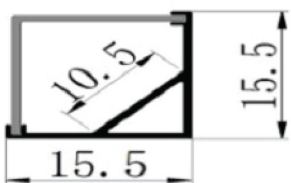
1. Aluminum profile
2. Opal PC diffuser
3. 2 pcs End cap/Piece
4. 2 pcs metal Clips/meter

Areas of application:

- > General indoor illumination
- > General outdoor illumination
- > Decorative illumination
- > Private living areas

CAPTION	THE VALUE
Material	Pure Aluminum
Color	Silver
Thickness	1 mm
Length	2 MTR
Width	15.5 mm
Height	15.5 mm

Dimensions



Accessories



Suggested Installation Areas



Apartment



Supermarket



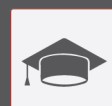
Retail Store



Office



Hotel



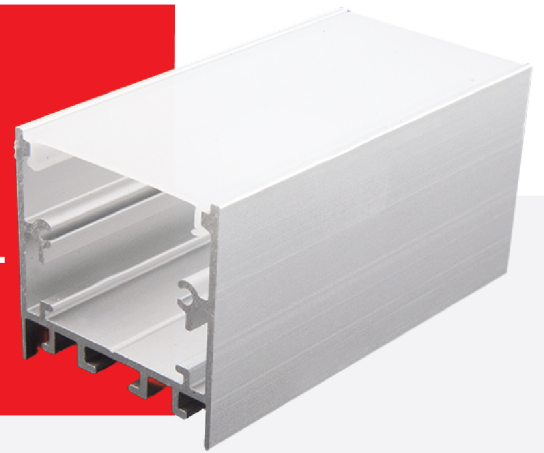
School



Hospital

ITEM NO: 504035

ALUMINUM PROFILE LINEAR MODEL SURFACE/PENDANT SIZE 35*35



What is linear lighting?

Linear lighting is defined as a linear shape luminaire (opposed to square or round). These luminaires long optics to distribute the light over a more narrow area than with traditional lighting. Usually, these lights are long in length and are installed as either suspended from a ceiling, surface mounted to a wall or ceiling or recessed into a wall or ceiling.

Each piece consists of 2 meters of High-Quality aluminum profile with very good thickness which helps in sinking the heat of the strip light.

Each Piece includes:

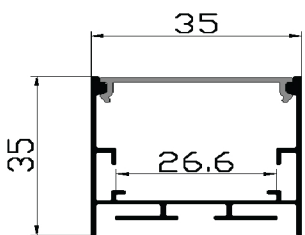
1. Aluminum profile
2. Opal PC diffuser
3. 2 pcs End cap/Piece
4. 2 pcs metal Clips/meter

Areas of application:

- > General indoor illumination
- > General outdoor illumination
- > Decorative illumination
- > Private living areas

CAPTION	THE VALUE
Material	Pure Aluminum
Color	Silver
Thickness	1 mm
Length	2 MTR
Width	35 mm
Height	35 mm

Dimensions



Accessories



Suggested Installation Areas



Apartment



Supermarket



Retail Store



Office



Hotel



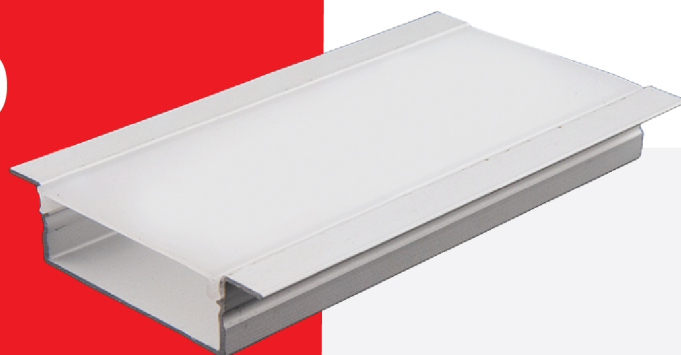
School



Hospital

ITEM NO: 504040

ALUMINUM PROFILE RECESSED SIZE 30*10



What is linear lighting?

Linear lighting is defined as a linear shape luminaire (opposed to square or round). These luminaires long optics to distribute the light over a more narrow area than with traditional lighting. Usually, these lights are long in length and are installed as either suspended from a ceiling, surface mounted to a wall or ceiling or recessed into a wall or ceiling.

Each piece consists of 2 meters of High-Quality aluminum profile with very good thickness which helps in sinking the heat of the strip light.

Each Piece includes:

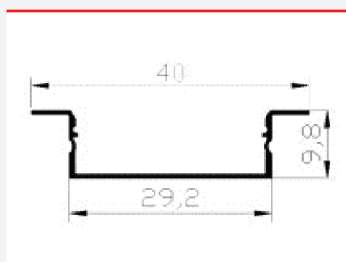
1. Aluminum profile
2. Opal PC diffuser
3. 2 pcs End cap/Piece
4. 2 pcs metal Clips/meter

Areas of application:

- > General indoor illumination
- > General outdoor illumination
- > Decorative illumination
- > Private living areas

CAPTION	THE VALUE
Material	Pure Aluminum
Color	Silver
Thickness	1 mm
Length	2 MTR
Width	30 mm
Height	10 mm

Dimensions



Accessories



Suggested Installation Areas



Apartment



Supermarket



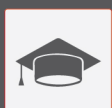
Retail Store



Office



Hotel



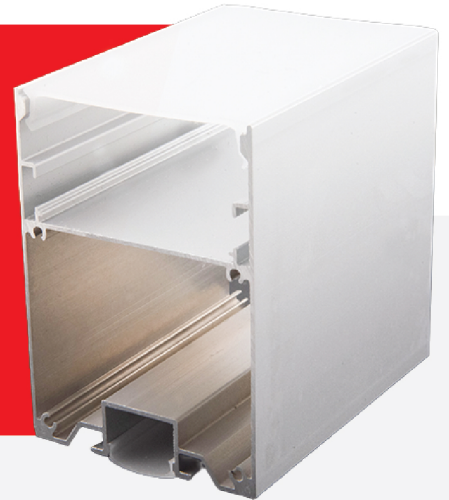
School



Hospital

ITEM NO: 504050

ALUMINUM PROFILE LINEAR UP & DOWN MODEL PENDANT SIZE 50*70



What is linear lighting?

Linear lighting is defined as a linear shape luminaire (opposed to square or round). These luminaires long optics to distribute the light over a more narrow area than with traditional lighting. Usually, these lights are long in length and are installed as either suspended from a ceiling, surface mounted to a wall or ceiling or recessed into a wall or ceiling.

Each piece consists of 2 meters of High-Quality aluminum profile with very good thickness which helps in sinking the heat of the strip light.

Each Piece includes:

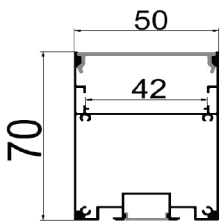
1. Aluminum profile
2. Opal PC diffuser
3. 2 pcs End cap/Piece
4. 2 pcs metal Clips/meter

Areas of application:

- > General indoor illumination
- > General outdoor illumination
- > Decorative illumination
- > Private living areas

CAPTION	THE VALUE
Material	Pure Aluminum
Color	Silver
Thickness	1 mm
Length	2 MTR
Width	50 mm
Height	70 mm

Dimensions



Accessories



Suggested Installation Areas



Apartment



Supermarket



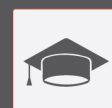
Retail Store



Office



Hotel



School



Hospital

ITEM NO: 504055

ALUMINUM PROFILE LINEAR MODEL SURFACE/PENDANT SIZE 55*75



What is linear lighting?

Linear lighting is defined as a linear shape luminaire (opposed to square or round). These luminaires long optics to distribute the light over a more narrow area than with traditional lighting. Usually, these lights are long in length and are installed as either suspended from a ceiling, surface mounted to a wall or ceiling or recessed into a wall or ceiling.

Each piece consists of 2 meters of High-Quality aluminum profile with very good thickness which helps in sinking the heat of the strip light.

Each Piece includes:

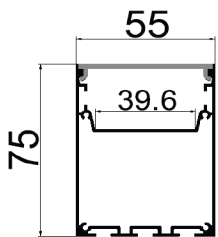
1. Aluminum profile
2. Opal PC diffuser
3. 2 pcs End cap/Piece
4. 2 pcs metal Clips/meter

Areas of application:

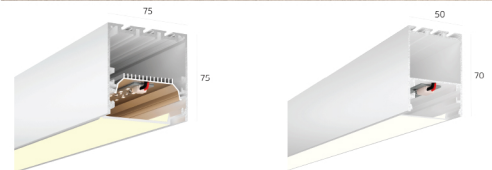
- > General indoor illumination
- > General outdoor illumination
- > Decorative illumination
- > Private living areas

CAPTION	THE VALUE
Material	Pure Aluminum
Color	Silver
Thickness	1 mm
Length	2 MTR
Width	55 mm
Height	75 mm

Dimensions



Accessories



Suggested Installation Areas



Apartment



Supermarket



Retail Store



Office



Hotel



School



Hospital

ITEM NO: 504062

ALUMINUM PROFILE WALK-OVER SIZE 15*20



What is linear lighting?

Linear lighting is defined as a linear shape luminaire (opposed to square or round). These luminaires long optics to distribute the light over a more narrow area than with traditional lighting. Usually, these lights are long in length and are installed as either suspended from a ceiling, surface mounted to a wall or ceiling or recessed into a wall or ceiling.

Each piece consists of 2 meters of High-Quality aluminum profile with very good thickness which helps in sinking the heat of the strip light.

Each Piece includes:

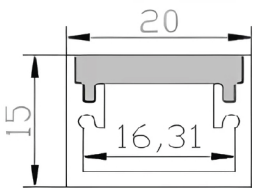
1. Aluminum profile
2. Opal PC diffuser
3. 2 pcs End cap/Piece
4. 2 pcs metal Clips/meter

Areas of application:

- > General indoor illumination
- > General outdoor illumination
- > Decorative illumination
- > Private living areas

CAPTION	THE VALUE
Material	Pure Aluminum
Color	Silver
Thickness	1 mm
Length	2 MTR
Width	20 mm
Height	15 mm

Dimensions



Accessories



Suggested Installation Areas



Apartment



Supermarket



Retail Store



Office



Hotel



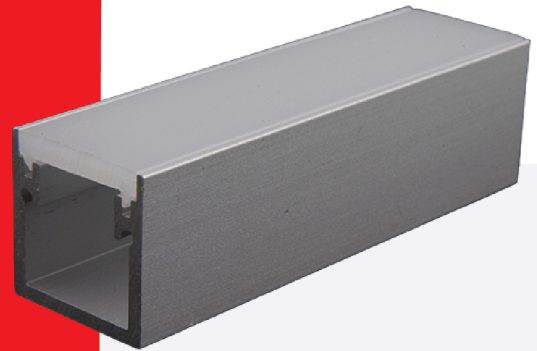
School



Hospital

ITEM NO: 504063

ALUMINUM PROFILE WALK-OVER SIZE 20*20



What is linear lighting?

Linear lighting is defined as a linear shape luminaire (opposed to square or round). These luminaires long optics to distribute the light over a more narrow area than with traditional lighting. Usually, these lights are long in length and are installed as either suspended from a ceiling, surface mounted to a wall or ceiling or recessed into a wall or ceiling.

Each piece consists of 2 meters of High-Quality aluminum profile with very good thickness which helps in sinking the heat of the strip light.

Each Piece includes:

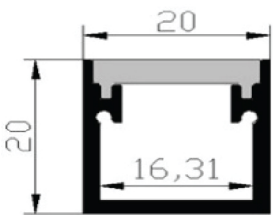
1. Aluminum profile
2. Opal PC diffuser
3. 2 pcs End cap/Piece
4. 2 pcs metal Clips/meter

Areas of application:

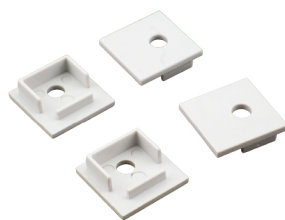
- > General indoor illumination
- > General outdoor illumination
- > Decorative illumination
- > Private living areas

CAPTION	THE VALUE
Material	Pure Aluminum
Color	Silver
Thickness	1 mm
Length	2 MTR
Width	20 mm
Height	20 mm

Dimensions



Accessories



Suggested Installation Areas



Apartment



Supermarket



Retail Store



Office



Hotel



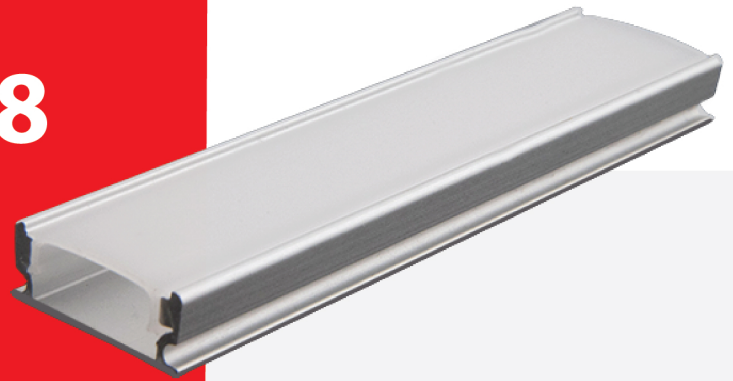
School



Hospital

ITEM NO: 504078

ALUMINUM PROFILE SIZE 17*7



What is linear lighting?

Linear lighting is defined as a linear shape luminaire (opposed to square or round). These luminaires long optics to distribute the light over a more narrow area than with traditional lighting. Usually, these lights are long in length and are installed as either suspended from a ceiling, surface mounted to a wall or ceiling or recessed into a wall or ceiling.

Each piece consists of 2 meters of High-Quality aluminum profile with very good thickness which helps in sinking the heat of the strip light.

Each Piece includes:

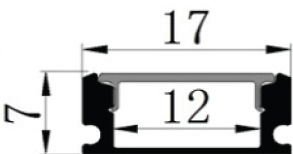
1. Aluminum profile
2. Opal PC diffuser
3. 2 pcs End cap/Piece
4. 2 pcs metal Clips/meter

Areas of application:

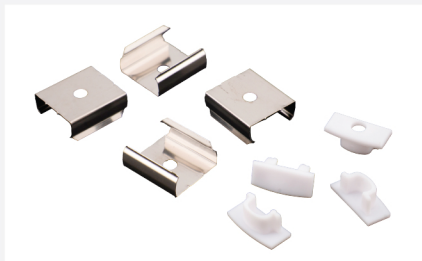
- > General indoor illumination
- > General outdoor illumination
- > Decorative illumination
- > Private living areas

CAPTION	THE VALUE
Material	Pure Aluminum
Color	Silver
Thickness	1 mm
Length	2 MTR
Width	17 mm
Height	7 mm

Dimensions



Accessories



Suggested Installation Areas



Apartment



Supermarket



Retail Store



Office



Hotel



School



Hospital

ITEM NO: 504085

ALUMINUM PROFILE SIZE 9.5*10



What is linear lighting?

Linear lighting is defined as a linear shape luminaire (opposed to square or round). These luminaires long optics to distribute the light over a more narrow area than with traditional lighting. Usually, these lights are long in length and are installed as either suspended from a ceiling, surface mounted to a wall or ceiling or recessed into a wall or ceiling.

Each piece consists of 2 meters of High-Quality aluminum profile with very good thickness which helps in sinking the heat of the strip light.

Each Piece includes:

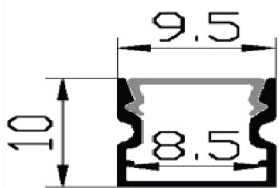
1. Aluminum profile
2. Opal PC diffuser
3. 2 pcs End cap/Piece
4. 2 pcs metal Clips/meter

Areas of application:

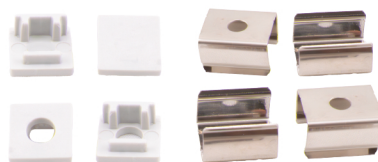
- > General indoor illumination
- > General outdoor illumination
- > Decorative illumination
- > Private living areas

CAPTION	THE VALUE
Material	Pure Aluminum
Color	Silver
Thickness	1 mm
Length	2 MTR
Width	9.5 mm
Height	10 mm

Dimensions



Accessories



Suggested Installation Areas



Apartment



Supermarket



Retail Store



Office



Hotel



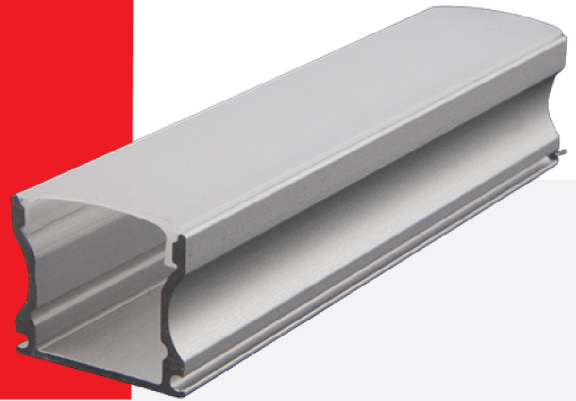
School



Hospital

ITEM NO: 504088

ALUMINUM PROFILE SIZE 17*14



What is linear lighting?

Linear lighting is defined as a linear shape luminaire (opposed to square or round). These luminaires long optics to distribute the light over a more narrow area than with traditional lighting. Usually, these lights are long in length and are installed as either suspended from a ceiling, surface mounted to a wall or ceiling or recessed into a wall or ceiling.

Each piece consists of 2 meters of High-Quality aluminum profile with very good thickness which helps in sinking the heat of the strip light.

Each Piece includes:

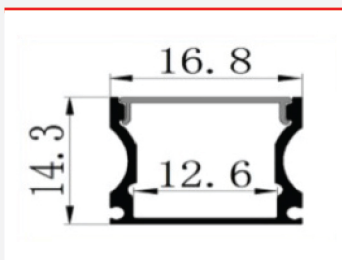
1. Aluminum profile
2. Opal PC diffuser
3. 2 pcs End cap/Piece
4. 2 pcs metal Clips/meter

Areas of application:

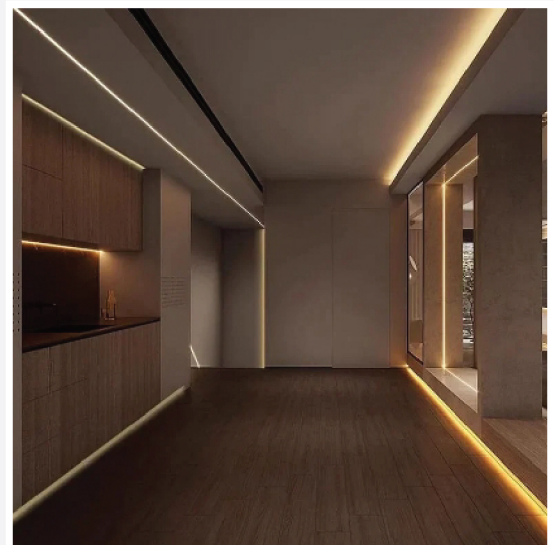
- > General indoor illumination
- > General outdoor illumination
- > Decorative illumination
- > Private living areas

CAPTION	THE VALUE
Material	Pure Aluminum
Color	Silver
Thickness	1 mm
Length	2 MTR
Width	16.8 mm
Height	14.3 mm

Dimensions



Accessories



Suggested Installation Areas



Apartment



Supermarket



Retail Store



Office



Hotel



School



Hospital

ITEM NO: 504113

FLEXIBLE ALUMINUM PROFILE SIZE 15*13



What is linear lighting?

Linear lighting is defined as a linear shape luminaire (opposed to square or round). These luminaires long optics to distribute the light over a more narrow area than with traditional lighting. Usually, these lights are long in length and are installed as either suspended from a ceiling, surface mounted to a wall or ceiling or recessed into a wall or ceiling.

Each piece consists of 2 meters of High-Quality aluminum profile with very good thickness which helps in sinking the heat of the strip light.

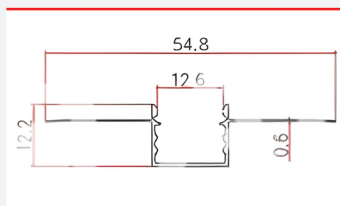
Each Piece includes:

1. Aluminum profile
2. Opal Silicone diffuser
3. 2 pcs End cap/Piece

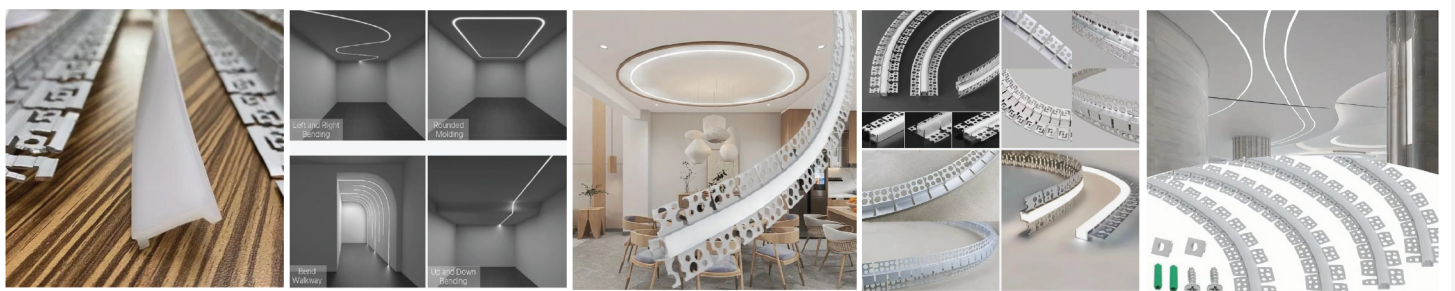
Areas of application:

- > General indoor illumination
- > General outdoor illumination
- > Decorative illumination
- > Private living areas

Dimensions



CAPTION	THE VALUE
Material	Pure Aluminum
Color	Silver
Thickness	1 mm
Length	2 MTR
Width	15 mm
Height	13 mm



Suggested Installation Areas



Apartment



Supermarket



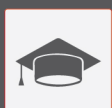
Retail Store



Office



Hotel



School



Hospital

SILICON PROFILE

Data Sheet

NEWPOWER[®]

ITEM NO: 504115

SILICON PROFILE RECESSED SIZE 15*10

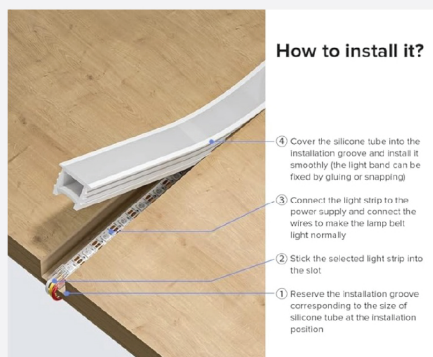


Areas of application:

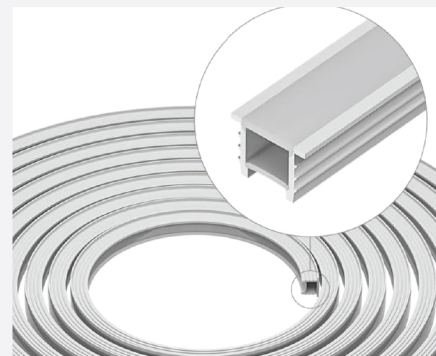
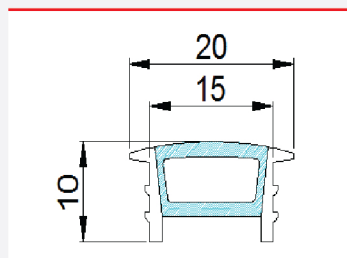
- > General indoor illumination
- > General outdoor illumination
- > Decorative illumination
- > Private living areas

How to install it

CAPTION	THE VALUE
Material	Silicon
Color	White
Thickness	2 mm
Length	2 MTR
Width	15 mm
Height	10 mm



Dimensions



Suggested Installation Areas



Apartment



Supermarket



Retail Store



Office



Hotel



School



Hospital

SILICON PROFILE

Data Sheet

NEWPOWER[®]

ITEM NO: 504120

SILICON PROFILE RECESSED SIZE 20*10

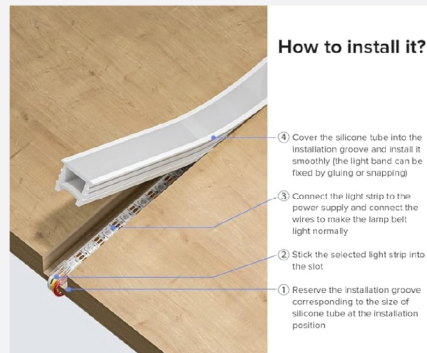


Areas of application:

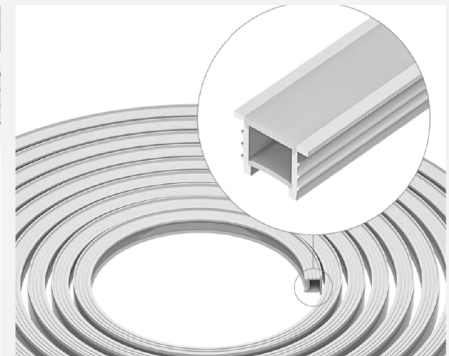
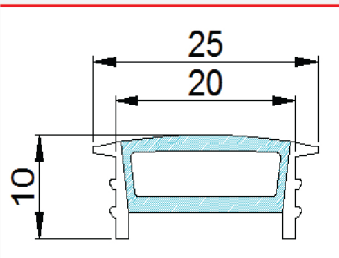
- > General indoor illumination
- > General outdoor illumination
- > Decorative illumination
- > Private living areas

How to install it

CAPTION	THE VALUE
Material	Silicon
Color	White
Thickness	2 mm
Length	2 MTR
Width	20 mm
Height	10 mm



Dimensions



Suggested Installation Areas



Apartment



Supermarket



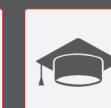
Retail Store



Office



Hotel



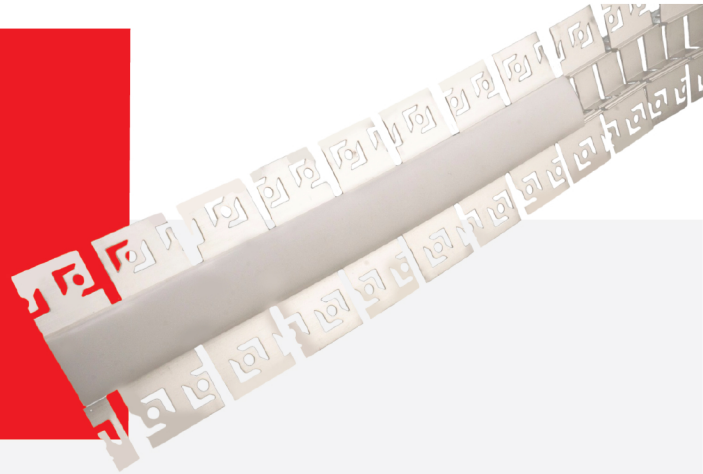
School



Hospital

ITEM NO: 504121

FLEXIABLE ALUMINUM PROFILE SIZE 20*13



What is linear lighting?

Linear lighting is defined as a linear shape luminaire (opposed to square or round). These luminaires long optics to distribute the light over a more narrow area than with traditional lighting. Usually, these lights are long in length and are installed as either suspended from a ceiling, surface mounted to a wall or ceiling or recessed into a wall or ceiling.

Each piece consists of 2 meters of High-Quality aluminum profile with very good thickness which helps in sinking the heat of the strip light.

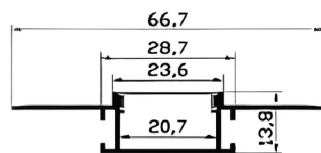
Each Piece includes:

1. Aluminum profile
2. Opal Silicone diffuser
3. 2 pcs End cap/Piece

Areas of application:

- > General indoor illumination
- > General outdoor illumination
- > Decorative illumination
- > Private living areas

Dimensions



CAPTION	THE VALUE
Material	Pure Aluminum
Color	Silver
Thickness	1 mm
Length	2 MTR
Width	20 mm
Height	13 mm



Suggested Installation Areas



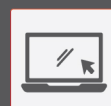
Apartment



Supermarket



Retail Store



Office



Hotel



School



Hospital